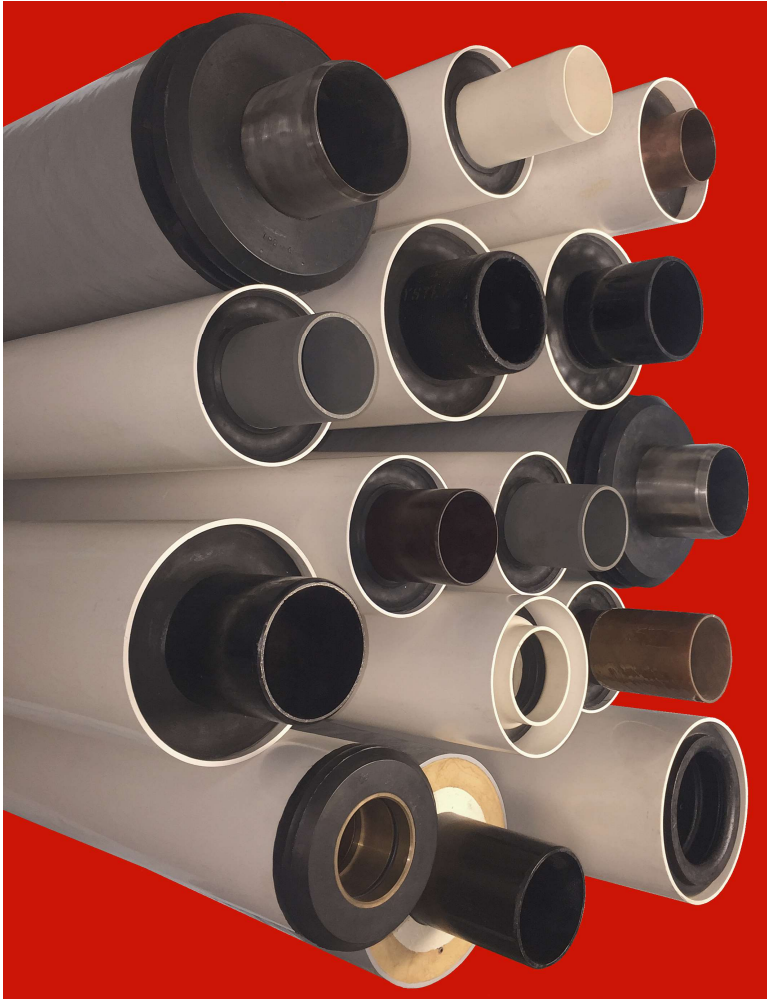


# Thermal Pipe Systems, Inc.

## PRE-INSULATED UNDERGROUND PIPING

### FOR HEATING AND COOLING SYSTEMS



**40 years of proven performance.**

**Unique push joints ...**

- *reduce installation cost*
- *eliminate expansion loops*
- *lower energy and operational costs*

**Complete line of carrier pipes:**

- *ductile iron*
- *steel*
- *copper*
- *PVC*
- *FRP*

**Insulation:**

- *polyurethane*
- *calcium silicate*
- *Foamglas®*
- *mineral wool*

**Casings:**

- *PVC*
- *FRP*
- *HDPE*

**National Representation:**

- *Regional Managers*
- *Independent Sales Agency Network*
- *Technical Services*

REPRESENTED BY:



## Thermal Pipe Systems, Inc.

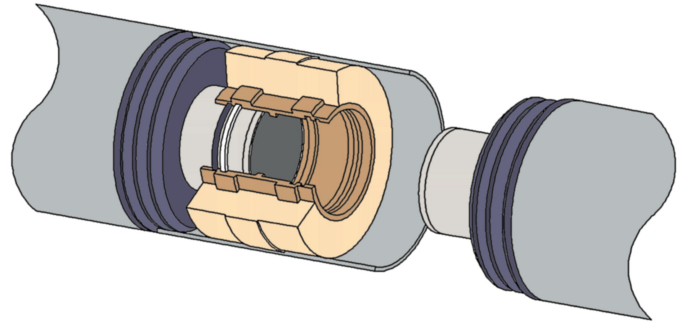
5205 W. Woodmill Dr. Suite 33 – Wilmington, DE 19808

Tel: 302-999-1588 – Fax: 302-999-8861

website: [www.thermalpipesystems.com](http://www.thermalpipesystems.com)

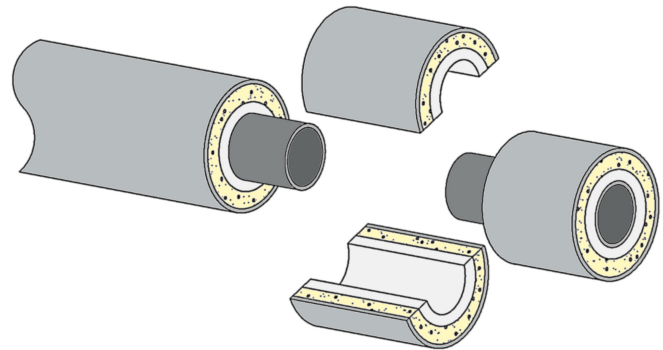
## **SUPER TEMP-TITE** ..... *For high pressure steam (up to 250 psi & 400°F)*

Super Temp-Tite is the most advanced steam transfer system available today. It combines steel pipe with calcium silicate and polyurethane insulation inside a corrosion resistant fiberglass casing. A unique slip-joint provides quick and easy installation and a "built-in" expansion system. The "thermofoam" insulation increases energy saving over conventional systems. Super Temp-Tite meets Federal Guide Specifications for steam and is supplied in sizes 3", 4", 6", 8", 10" and 12" for use in temperatures up to 400°F and 250 psi.



## **SUPER WELD-TITE** ..... *For high temperature hot water, steam, and condensate*

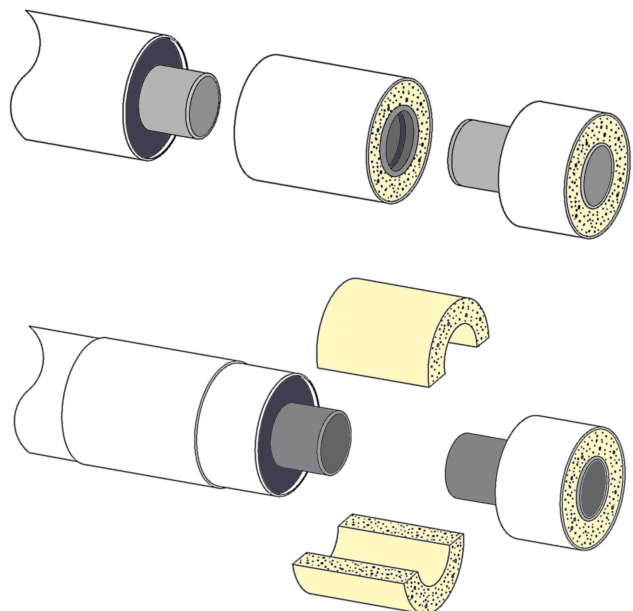
Super Weld-Tite is dual insulated, welded pipe system for high temperature hot water, steam, and condensate. Steel pipe and fittings are insulated with combination of calcium silicate or Foamglas® and polyurethane insulation inside a corrosion resistant fiberglass casing. Insulation of field joints is accomplished with half shells with FRP casing and FRP overwrap kits. Super Weld-Tite is supplied in sizes 1½" - 16" and is suitable for temperatures up to 450°F.



## **HEAT-TITE & WELD-TITE** ..... *For condensate & low temperature hot water*

**Heat-Tite** pipe features a gasketed coupling with built in expansion control. It is a pre-insulated steel pipe designed for use in condensate, low temperature hot water, and chilled water application. The system is insulated with polyurethane foam in a tough PVC or HDPE jacket. It is joined with a grooved iron coupling with rubber sealing rings. The coupling is pre-insulated to save installation time. Heat-Tite meets Federal Guide Specifications for condensate and hot water and is supplied in sizes 1½"-12" for use in temperatures to 250°F.

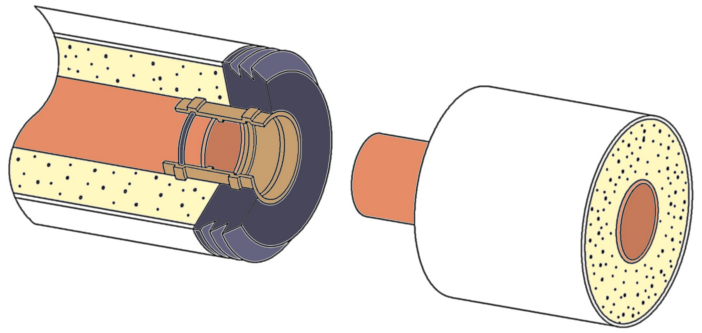
**Weld-Tite** is a similar product to use where welded pipe joint is desired. A slip over casing sleeve and insulation half shells are supplied. Weld-Tite is available in sizes 1½" - 24".



## COPPER-CORE .....

*For domestic & heating  
hot water systems*

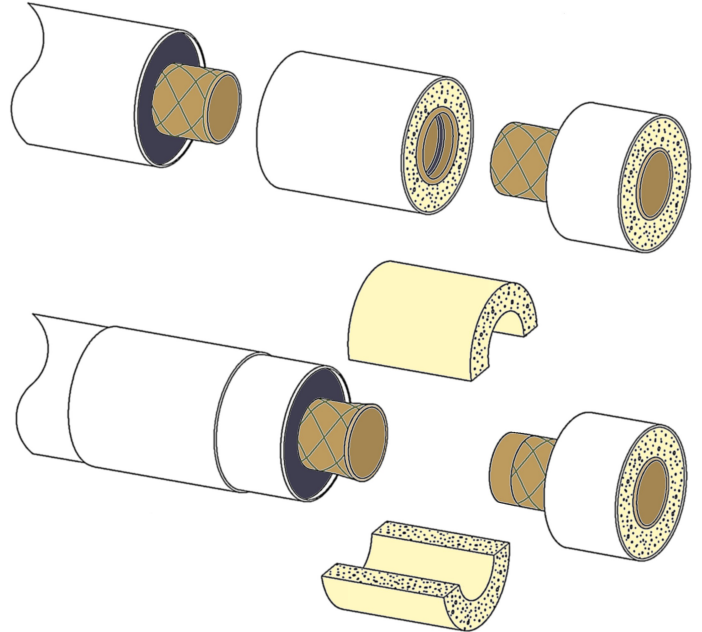
Copper-Core is a pre-insulated copper pipe designed for chilled water and low temperature hot water service. Insulation is polyurethane foam in a PVC or HDPE casing. The pipe has a unique factory prepared one-step rubber ring joining system which results in a fast, efficient fully insulated installation. Copper-Core is supplied in sizes 1"-6" for temperatures from 35°F to 250°F.



## VEE-TITE 230 & TAPER-TITE 230.....

*High flow, corrosion free service for  
condensate & low temperature hot water*

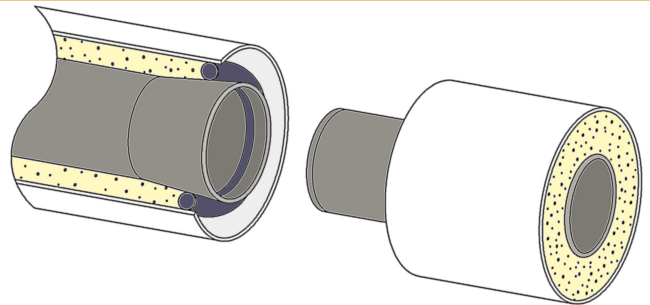
These fiberglass reinforced resin pipes are ideally suited for steam condensate return lines and other hot water heating applications. Fiberglass, with high flow characteristics, offers an alternative to steel piping. The carrier pipe is engineered to solve tough corrosion problems. **Vee-Tite** system has separate gasketed couplings for ease of installation and provides a leak free system without adhesives or heat curing the pipe joints. **Taper-Tite** utilizes a matching tapered bell and spigot design with an adhesive bonded joint. These FRP systems are insulated using polyurethane foam and a heavy wall PVC or HDPE casing. They meet Federal Guide Specifications for condensate and hot water and are supplied in sizes 2"-12" for use in temperatures to 230°F.



## DUC-TITE .....

*For low temperature hot and/or  
chilled water systems*

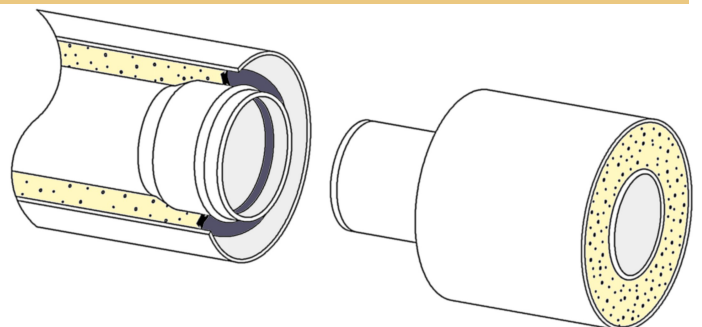
Duc-Tite is a pre-insulated ductile iron, gasketed pipe system with polyurethane insulation and a PVC or HDPE casing. The joint system eliminates the need for expansion devices. Duct-Tite is available in sizes 3"-18" and can be used for temperatures from 35°F to 250°F service at pressures up to 150 psi.

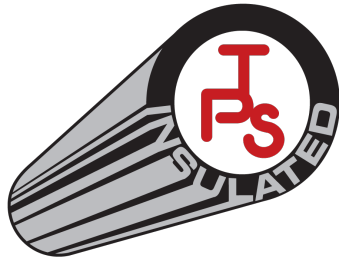


## KOOL-KORE .....

*PVC pipe with high flow, corrosion  
free service for chilled water*

Kool-Kore is an economical pre-insulated polyvinyl chloride pipe for underground chilled water distribution systems. This product consists of a PVC carrier pipe surrounded by polyurethane foam insulation inside a PVC or HDPE casing. Kool-Kore combines the corrosion resistance and high flow characteristics of PVC with polyurethane insulation. Kool-Kore is supplied in sizes 1½"-16" for temperatures from 35°F to 120°F.





# Thermal Pipe Systems, Inc.

## APPLICATION AND PRODUCT SELECTION

| APPLICATION                               | CARRIER/CASING             | PRODUCT         | JOINT  | SIZES       | TEMPERATURE RANGE | MAXIMUM OPERATING PRESSURE, PSI |
|---|----------------------------|-----------------|--------|-------------|-------------------|---------------------------------|
| Steam                                     | Steel / FRP                | Super Temp-Tite | Push   | 3" - 12"    | 212°F-400°F       | 250                             |
| High temperature hot water and condensate | Steel / FRP                | Super Weld-Tite | Welded | 1 1/2" -16" | 250°F-450°F       | 250                             |
| Low temperature, including condensate     | FRP / PVC or HDPE          | Vee-Tite        | Push   | 2"-12"      | 35°F-230°F        | 150                             |
|   | FRP / PVC or HDPE          | Taper-Tite      | Bonded | 2"-12"      | 35°F-230°F        | 150                             |
|   | Steel / PVC or HDPE        | Heat-Tite       | Push   | 1 1/2"-12"  | 35°F-250°F        | 150                             |
|   | Steel / PVC or HDPE        | Weld-Tite       | Welded | 1 1/2"-24"  | 35°F-250°F        | 150                             |
| Low temperature, excluding condensate     | Copper / PVC or HDPE       | Copper-Core     | Push   | 1"-6"       | 35°F-250°F        | 150                             |
|   | Ductile Iron / PVC or HDPE | Duc-Tite        | Push   | 3"-18"      | 35°F-250°F        | 150                             |
| Chilled Water*                            | PVC / PVC or HDPE          | Kool-Kore       | Push   | 1 1/2"-16"  | 35°F-120°F        | 150                             |

\* All low temperature products can be used for chilled water.

## Thermal Pipe Systems, Inc.

5205 W. Woodmill Dr. Suite 33 – Wilmington, DE 19808

Tel: 302-999-1588 – Fax: 302-999-8861

website: [www.thermalpipesystems.com](http://www.thermalpipesystems.com)